

# The Exchange

Volume 8 Issue 2

SPRING 2008

## Our Mission

To promote adult and family literacy in Southeastern Wisconsin.

## Inside this issue:

<i>YOU can support GMLC scholarships</i>	2
<i>Literacy Summit continued</i>	3
<i>Five Minutes with: Diane Steigerwald</i>	4
<i>Award Nominations</i>	5
<i>Agency News Briefs</i>	6
<i>GMLC members win state awards</i>	7
<i>MATC teacher publishes her own ELL curriculum</i>	8
<i>Walton headlines 2008 Literacy Luncheon and Report to the Business Community</i>	8
<i>Goodwill's Adult Learning Center focuses on lifelong learning</i>	9
<i>On-line Resources</i>	10
<i>Curriculum conference offers several highlights</i>	10

## Regular features:

<i>President's Message</i>	2
<i>GMLC Affiliate Members Number 24</i>	7
<i>Student Success: A Speaking Engagement</i>	11
<i>Student Writing: I Am Mone</i>	11
<i>GMLC Dates</i>	12

## Literacy Summit stresses need for collaboration

Three specific action steps emerged from the GMLC's First Annual Literacy Summit:

- Expand the geographic boundaries of our literacy focus to include the seven counties surrounding Milwaukee;
- Increase collaboration among literacy providers and other agencies in the region;
- Identify the range of services available, thereby identifying gaps in service as well.

The Literacy Summit brought together about 60 people, representing educators, elected representatives, policy makers and funding agencies throughout Southeastern Wisconsin. The Summit was held February 29 at the Tripoli Shrine Center in Milwaukee. Sponsors were the Jane Bradley Pettit Foundation, Rotary District 6270 and Verizon Foundation.

"As leaders in the fight for literacy in our communities, we must all continue to pursue the most effective means of solving our literacy crisis," said GMLC President Barbara Felix. Outcomes of the Summit will guide strategic planning and direction for the GMLC, and no doubt also will influence efforts of member agencies.

### Barrett stresses urgency of support for literacy

Most people do not think about literacy unless they can't read, said Milwaukee Mayor Tom Barrett, who gave the keynote address. However, Barrett continued, the United States will be unable to compete in the world economy if its citizens do not have basic reading skills. Illiteracy has "deep ramifications," according to the Mayor.

Since 27 percent of Milwaukee adults are functionally illiterate, Barrett stressed the importance of the work of various literacy centers in the greater Milwaukee area, as well as the urgent need for more volunteer tutors.

Barrett asked participants to consider two questions dur-



The audience awaits the start of the Literacy Summit

(Continued on page 3)

## President's Message: Growth and Renewal in GMLC

As we finally emerge from the longest, coldest, snowiest winter in memory, we brighten to sensations of new growth everywhere. Throughout the harsh months of winter, GMLC affiliates and individual members were busy preparing for growth and renewal in our literacy programs and services. I am happy to report signs of new growth occurring in several areas.

Our First Annual GMLC Literacy Summit on February 29 brought together practitioners and advocates for a day of information and discussion. Three specific goals were agreed upon, and will form the basis for additional efforts in the coming months. Those goals, described on the story begin-

ning on page 1 of this issue, address the need for increased collaboration among literacy providers, expanded geographic range of programs and services, and a more detailed directory of services available to potential learners, volunteers and donors. These are concrete, actionable, achievable steps that will benefit our community and its residents. We will pursue these goals with vigor, and I look forward to reporting our accomplishments to you in the near future.

The time is right for GMLC to recognize the larger geographic area that we serve, and to consider a name change to reflect that. Current members include agencies in several counties:

Milwaukee, Racine, Kenosha, Jefferson, Waukesha, Wash-



ington and Ozaukee. The GMLC board will take up the question of a change in our organization's name to one that is inclusive of our broad range of activity. Your board is interested in your thoughts and suggestions on this topic.

As GMLC increases and expands its services, we are pleased to welcome new individual members and affiliate members. We look forward to sharing with you in the efforts and achievements of this vital and growing organization in southeastern Wisconsin!

*Barbara Felix*

## YOU can support GMLC Scholarships

When you opened your newsletter this time you undoubtedly noticed the envelope that was included with this edition. This is a new effort on the part of the GMLC Scholarship Committee to keep our scholarship funds healthy and growing.

Since 1995, the GMLC has proudly awarded scholarships to college-bound GED/HSED graduates from Southeastern Wisconsin. In the past, awards have gone to students from Silver Spring Neighborhood Center, Journey House, Adult Learning Center, Goodwill Industries, Milwaukee Urban League, YWCA Vel Phillips

Center, Council for the Spanish Speaking, and MATC. The committee is currently working on making sure all of the qualified students in Southeastern Wisconsin are aware of the GMLC scholarship opportunities.

Donations received from members, friends and literacy advocates allow GMLC to continue awarding scholarships to deserving GED/HSED graduates. If each of the three scholarship funds received a minimum of \$500 in donations each year, none of the principal would have to be used for awards. This would allow each of the funds to continue

growing and, at the same time, maintain the future of the scholarships. Even better, if enough donations were received, it would enable GMLC to increase the amount of the awards, which has remained at \$500 since the scholarships were initiated.

For any of this to happen, your help is needed. Please consider a donation to one of the scholarship funds: Nancy Fink Fund, Anne Marie Pawelke Fund and GMLC General Fund. And as you do, remember that these scholarships directly address the GMLC mission of promoting adult and family literacy.

*Gretchen Zallar*

# Literacy Summit continued

(Continued from page 1)



Mayor Tom Barrett

ing the daylong workshop: What can you do? What are you willing to do? He urged the audience to strive for answers to these questions and to continue the work of raising the literacy rate in Southeastern Wisconsin.

*Pat McKay*

## Panel urges collaboration

Collaboration and urgency about the ramifications of illiteracy also marked a panel discussion. Participants were Cecilia Gore, program director of the Jane Bradley Pettit Foundation; Dr. Earnestine Willis, Medical College of Wisconsin, Reach Out and Read, and Alan Borsuk, education reporter for the *Milwaukee Journal Sentinel*.

Gore suggested that literacy agencies collaborate in writing grants so they are not competing against one another. She pointed out that the Pettit Foundation receives about 120 requests for funding each cycle, and while the programs are worthwhile, the Pettit Foundation cannot fund them all. The board has a difficult time decid-

ing who receives priority, Gore said.

Willis highlighted the connection between illiteracy and poor health. Since many people are unable to read directions and doctors' instructions, their health and nutrition choices fall short of healthful. The Reach Out and Read program is sponsored by the Medical College of Wisconsin, and operates five sites in the area. Books are provided for families to keep, and parents are encouraged to read to their children when they come for doctor appointments. Nutrition and medical information is provided to both parents and children, and adults are helped with reading directions from doctors and pharmacists.

Borsuk warned about the indifference he sees concerning illiteracy. He reinforced Mayor Barrett's message that we need to get angry so that something gets done. Wisconsin's reading scores are the lowest in the country, and there is a huge gap between the achievement of white students and black students. Borsuk recommended that literacy advocates use student writings to help convince

public representatives and policy makers that literacy is a critical issue, and that they concentrate on the common needs of funding, volunteers and professional development.

*Sue Effinger*

## Milwaukee statistics link illiteracy with poverty, race

Todd Clausen, Data Center coordinator for the Nonprofit Center of Milwaukee, presented information about the City of Milwaukee, Milwaukee County, Southeastern Wisconsin, the State and the globe. The maps he provided showed the distribution of poverty and unemployment, both geographically and by race. The statistics also showed how factors such as immigration, dyslexia and imprisonment might affect literacy rates in our region.

Summit participants expressed concerns about what the information could predict for the future. Clausen also gave ideas of how organizations in Southeastern Wisconsin can work together to provide services more efficiently and effectively.

*Anna Beirer*



Panelists Alan Borsuk, Dr. Earnestine Willis, and Cecilia Gore

## Five Minutes With: Diane Steigerwald

Diane Steigerwald and I met when we worked across the street from one another at 6<sup>th</sup> Street and National Avenue about eight years ago. I was managing *¿Qué Pasa?* Bookstore, and she was teaching ESL at the Spanish Center. We remain connected through GMLC.

The morning the *Key Readers as Writers Contest* winners were announced, I rose early to check the list on-line. I was amazed to find that Diane was the instructor of seven winners and one honorable mention. I wanted to know how she does it.

### What attracts you to ESL?

The love of communicating and experiencing cultures and languages with my students. Also, the art of teaching, creatively developing ways to enable people to grasp meaning and communicate.

### How long have you been working with this population?

For over 30 years. I started as a home tutor, riding my bike to teach people who were homebound, primarily people with young families.

### How did you interest your students to enter MATC's Readers as Writers Contest?

The writing process for "publishing" is part of my curriculum at the higher-level classes of ESL and in my Basic Skills Level 1 class. The focus is writing to share experiences or ideas with others and their families. We publish their writings in a booklet they take home. Also, their writings are placed on a bulletin board, "Authors of the Spanish Center."

### How many entered?

Fifteen students entered.

### What's your secret?

I think it's because the focus is not on the contest, but on expressing themselves and giving voice to their ideas. I encourage originality, description and examples.

### What was your process of instruction in creating the submissions?

I introduce the idea of writing by showing past Readers as Writers books. We read samples, highlighting writers from our program, some of whom they know. We note topics, genres, styles and length. Then we discuss their ideas. Students

can take books home with them to read. I ask them to note which writings resonated with them. Once they are inspired with an idea, they write. I tell them to write their thoughts without worrying about mistakes. Later, they'll reread and rewrite them and decide to eliminate, add, clarify and reorganize. Then I go over their writing and ask them to clarify what I don't understand, and I point out grammar usage. Together, we organize, deciding on where to put paragraphs. They revise until they're satisfied it says what they want to say.

### How long was the process from start to finish?

I try to keep it short, so we don't lose students. It's from two weeks to a month. The writing is primarily done for homework. Then there is one-on-one with the instructor. It is just part of class time.

### What tips would you give other ESL instructors who would like to follow in your footsteps?

Make it personal. Publish a book for them to take home to their family.

*Cynthia Zarazua*

## Nominations for the GMLC Spirit Award

This award goes to a GMLC member (person or group) that embodies the spirit of literacy in action in our community. The award is given at our annual meeting, and the names of the recipients are listed on a plaque, which is displayed in the meeting room at Literacy Services of Wisconsin.

Any GMLC member may submit a nomination. If you wish to nominate a committee, group or an individual, please use the criteria listed below and supply enough details about the nominee to give the selection committee a thorough idea of the nominee's contributions.

**Name of Nominee:** \_\_\_\_\_

**Affiliation:** \_\_\_\_\_

**Submitted by:** \_\_\_\_\_

**Affiliation:** \_\_\_\_\_

Nominees will be rated on a one to ten scale in the following areas:

1. The length of time the individual or group has been involved in adult literacy.
2. The hours per week invested in adult literacy.
3. The accomplishments of the individual or group.
4. The degree to which the individual or group connects with the broader literacy community, including the GMLC, to promote the goal of literacy to the community at large.
5. Does the nominee work on special projects beyond job obligations? What is the impact of the projects on adult literacy?

## Nominations for GMLC Community Service Award

This award recognizes organizations or individuals who are not members of the GMLC, and whose primary function is not literacy, but who have been active in supporting the coalition and promoting literacy in the community. The award is given only when a worthy recipient is brought to the attention of the GMLC. Any GMLC member may submit a nomination.

**Name of Nominee:** \_\_\_\_\_

**Affiliation:** \_\_\_\_\_

**Submitted by:** \_\_\_\_\_

**Affiliation:** \_\_\_\_\_

Please use the criteria below to tell why you think the organization should receive the Community Service Award.

Nominees will be rated on a one to ten scale in the following areas:

1. The length of time the organization or individual has been contributing to adult literacy.
2. The degree to which the organization or individual contributes to the literacy community, including the GMLC, to promote the goal of literacy to the community at large.
3. The impact the organization's project has on adult literacy.

*Send nominations to Selection Committee, GMLC, P.O. Box 511121, Milwaukee, WI, 53203.*

*Deadline for nominations is July 15, 2008.*

## Agency News Briefs

### Milwaukee Achievers Celebrates 25<sup>th</sup>

A screening of the haunting film, **Sweet Land**, is part of Milwaukee Achievers' celebration of its 25<sup>th</sup> anniversary. The film will be shown on Monday, July 21, at 7 p.m. at The Times Cinema, 5906 W. Vliet St. in Milwaukee. Cocktails and *hors d'oeuvres* will be served at 6 p.m., and attendees will have the opportunity to meet the film's award-winning director, Ali Selim.



The film focuses on a German mail-order bride and her Norwegian immigrant husband. While telling their love story, the film doubles as a commentary on immigration and American identity.

Tickets are \$10 and can be purchased in advance at [www.milwaukeeachiever.org](http://www.milwaukeeachiever.org), or before the movie on July 21 at The Times Cinema. For further information, call 414-643-5108.

### Journey House moves administrative offices into Clarke Square Pick 'n Save upper rooms

Journey House has moved its administrative offices to the Clarke Square Pick 'n Save store. Two office suites and conference rooms have been made available to the agency for free. In the future, Journey House plans to build a \$5 million consolidated location that would include classrooms, offices, computer labs and an 8,000 square foot gym and recreational facility. But until then, the agency saves about \$18,000 a year by setting up administrative services in the Pick 'n Save upper floor. Various other programs are still located at other facilities.



### *El Dia de los Ninos* Children's Day

More than 1,000 children and adults took part in the annual *El Dia de los Ninos/Children's Day* sponsored by the Council for the Spanish Speaking, Inc., in partnership with MPS. Children's Day was held on Saturday, April 26, at South Division High School. It was a lively, heart warming, enriching experience of fun, learning and cultural appreciation.

The event promoted children and family health and culture. The participants were awed by the children's dance groups and performances representing different cultures and age groups. Vieau School Dancers, church children choirs and groups, and the Asian Club of high schools presented colorful and musical shows to the audience. Also, the *Trio Alma Latino* serenaded mariachi style and Grand D radio broadcasted from the site. There were clowns, the big Chorizo from the Brewers, face painting, games and prizes. For parents, there were resources and information about health and education services.

*El Dia de los Ninos* is a holiday of Latin American origin. It is recognized in many communities across the country as a day to celebrate and honor children and to remind communities of their responsibility to ensure the health and well-being of their youngest citizens.

*Diane Steigerwald*

## GMLC members win state awards

Several GMLC Affiliate Members are winners in the 2008 Wisconsin Celebration of Literacy. Winners received their awards at the sixth annual dinner held at the Edgewater Hotel in Madison on Thursday, May 8.

The First Lady Jessica Doyle Award for Family Literacy Winner was **Racine Family Literacy**. Accepting the award was the executive director, Richard Marciniak.



Richard Marciniak

Honorable Mention for the First Lady Jessica Doyle Award:

**Jefferson County Family Literacy Program,  
Jefferson County Literacy Council**

The Literacy Advocate of the Year Winner was **Dr. Paul Smith** representing the **Racine Literacy Council**.

Congratulations to all the winners, and to all who were nominated.



Dr. Paul Smith

## GMLC now has 24 affiliate members

Once again, GMLC is pleased to count among its 24 affiliate members those who recently joined or renewed:

**Adult Learning Center  
Boys and Girls Clubs of Greater Milwaukee  
Cardinal Stritch University  
Council for the Spanish Speaking  
Goodwill Industries of Southeastern WI, Inc.  
Lakeland College—Milwaukee Center  
MATC (Milwaukee Area Technical College)  
Silver Spring Neighborhood Center**

We welcome these new members as they join the rest of our affiliate member organizations:

**Adult Literacy Center, Grafton  
International Learning Center  
Jefferson County Literacy Council  
Journey House  
Literacy Services of Wisconsin, Inc.  
Milwaukee Achiever Literacy Services  
Milwaukee Public Library  
Multicultural Community Services, Inc.  
Omega School, Madison**

**Racine Correctional Institution  
Racine Family Literacy  
Racine Literacy Council  
Repairers of the Breach  
UMOS (United Migrant Opportunity Services)  
Wisconsin Literacy, Inc.  
YWCA Greater Milwaukee**

Becoming an affiliate member of GMLC makes our organization stronger as it grows to represent more agencies that are concerned with the problems and implications of literacy issues in South-eastern Wisconsin. It also enhances each agency to be able to draw upon the resources of the larger group as we truly become a coalition with a larger voice.

All affiliate agencies are listed on the GMLC website, [www.gmlcwi.org](http://www.gmlcwi.org), each receives this quarterly newsletter, *The Exchange*, and each is entitled to one voting representative. They are also listed in any advertisements or public events. Please contact the GMLC Membership Chair at P. O. Box 511121, Milwaukee, WI 53203-0191 or visit our website for further information.

## MATC teacher publishes her own ELL curriculum

Buying textbooks is an economic barrier for many students, especially when more than one book is needed for a particular class. Dr. Wendi K. Halstead developed a low-cost, holistic solution to this problem: she created and published her own English Language Learner curriculum for her ELL students. She was able to cut in half the cost for her students by self-publishing these materials and making them available to purchase in the MATC Bookstore.

Halstead spoke to GMLC members at the April 18 meeting, which was held at the Council

for the Spanish Speaking, 614 W. National Ave. She also walked participants through a sampling of workforce-specific materials.

Halstead had two goals in mind when developing the ELL curriculum she uses. First, it builds the learner's reading ability by increasing vocabulary, increasing knowledge of the structure of standard English, increasing understanding of prefixes and suffixes, and providing experience in reading for specific purposes. Halstead's second goal is to prepare learners for the world of work in the United States.

Halstead used Lulu.com to self-publish her book, but she found many other on-line sources of help. **On the Job: Reading for English Language Learners** is now available at the MATC Bookstore and soon will be on Amazon.com.

Halstead has an extensive background in the teaching of English Language Learners and her educational emphasis is in linguistics. Her vast experience is a resource for others working to assist individuals to increase their English-language and workforce-literacy skills. She can be reached at [halsteaw@matc.edu](mailto:halsteaw@matc.edu).

*Holly Thielen*

## Walton headlines 2008 Literacy Luncheon and Report to the Business Community

Federal Judge Reggie Walton has been appointed by three U.S. Presidents and has won a multitude of accolades in a distinguished law career. Yet he recalls a time when he was instructed by his 11<sup>th</sup> grade teacher to read aloud to the class, and he could not do it.

It was this moment that led him to dedicate himself to education. He eventually excelled in college and law school. His commitment to education propelled him from a small town in Penn-



sylvania to the District of Columbia as a Federal Judge.

His testimonial and keynote address moved the audience to a standing ovation, and many were moved to tears by his words. Judge Walton's story is one that inspires us all to see the

potential in ourselves. He was especially motivating for the students of Literacy Services, who realized how much they could accomplish.

Over 250 individuals attended the 3<sup>rd</sup> Annual Literacy Luncheon & Report to the Business Community held at the Italian Community Center on May 1. Thanks to our corporate sponsors and individual ticket sales, it is estimated that nearly \$50,000 was raised for Literacy Services.

*Nick Lyons*

## Goodwill's Adult Learning Center focuses on lifelong learning

You probably know that Goodwill, founded in 1919, provides work opportunities and skill development for people with barriers to employment (individuals with disabilities, economic disadvantages, ex-offenders, and so on). But did you know that Goodwill also offers Basic Education and GED preparation through its Adult Learning Center?

“No matter their backgrounds, our students have one common denominator – their desire to improve their lives through education,” said Rise Tucker, Goodwill volunteer.

Goodwill Industries of Southeastern Wisconsin is the largest of the 168 Goodwills in North America. Goodwill serves more than 12,000 people annually in southeastern Wisconsin (including Milwaukee) and northern Illinois (including Chicago). The James O. Wright Center, 6055 N. 91<sup>st</sup> St. in Milwaukee, is headquarters and houses many of the programs Goodwill offers. Services also are available in over 50 other locations throughout Southeastern Wisconsin and Metropolitan Chicago.

The Georgia Susnar Wright Adult Learning Center focuses on lifelong learning. The center was named in honor of the late wife of Goodwill Board Chairman Emeritus James O. Wright.

“I always thought I could do more, but for the first time, I feel like I have my whole life ahead of me.”  
Charlett Perkins  
Goodwill Employee and  
Recent GED recipient

Open to both Goodwill employees and Goodwill program participants, the Adult Learning Center offers individualized instruction from knowledgeable professionals who focus on results. The first goal is to help students increase their knowledge to their desired academic level, using pre- and post-testing. A second goal is to work with individuals to build self-confidence.

“The Adult Learning Center is helping me to reach goals that I

had once thought were impossible,” said Michelle Johnson, a student enrolled in a Business Training program at Goodwill’s Adult Learning Center.

In 2005, Goodwill partnered with MATC (Milwaukee Area Technical College) to provide Adult Basic Education and GED preparation. Two part-time MATC instructors work one-on-one with individuals to enhance their academic skills. In addition, Goodwill has a host of dedicated volunteers.

The Adult Learning Center offers instruction/support in English as a Second Language, Math, Reading, Language Skills, Writing and General Equivalency Degree (GED).

Peter Kafkas, MATC Instructor stated: “With the assistance of the MATC instructors, Goodwill does what it does best . . . offering a hand to people who choose not be defined by a disability, but rather, elect to better themselves by working hard to integrate socially and professionally into the mainstream of life.”

*Jennifer King, MS  
Supervisor Vocational  
Support Services  
Goodwill Industries*

## On-Line Resources

### Thinkfinity.com

Thinkfinity.com provides an almost endless array of free educational resources. It includes lessons, lesson plans, student materials, and Web resources for all learning levels. Thinkfinity's Read, Write, Think resources are the result of a partnership of the National Council of Teachers of English, the International Reading Association and Verizon Foundation. The site aims to provide access to standards-based materials for educators and students that include the highest quality practices and resources in reading and language arts. Most items can be printed out and duplicated. This is the program that was demonstrated at the GMLC Literacy Summit in February.



### Curriculumbank.com

This Website offers a survey of educational items for sale: teaching programs, learning products, teacher resources, technology lesson plans, many of them in Spanish, from the pre-school to university levels. There also is a listing of teacher positions across the country, and educational programs by area.

## Curriculum Conference offers several highlights

John Kerr, of Puyallup, Washington, gave an outstanding presentation about Pierce College's Pre-College/ABE/ESL programs during the 2008 Annual Curriculum Conference on April 10 and 11 at the Heidelberg House in Green Lake, Wisconsin.

Pierce College pairs a basic-skills instructor with a professional-technical instructor in all content classes, with 100 percent overlap instruction. This program is called I-BEST. Many students have been placed in well-paying jobs through this intensive program.

In another program at the college, students take 14-week classes that prepare them to be licensed and work as Protection or Correction Officers. Students earn 20

credits toward a certificate in Criminal Justice, 5 credits toward a certificate in Homeland Security, and 20 credits transferable to an Associate Degree in Criminal Justice. Corrections Officers earn \$27,000-\$42,000 per year with excellent benefits.

Other programs at the college are built around nursing degrees and business degrees. Students are immersed in their subject with very strict and intense schedules. ESL and work-related subjects are taught together – one with an ESL instructor and another with an occupation instructor.

Another track at the conference was the Curriculum Projects. The ELL steering committee, of which I am a member, presented an overview of the finalized Above-the-Line curriculum and the Below-the-Line curriculum, along with

learning plans and teaching notes.

The second part of this track was to share ideas about what we are teaching in our classes. Our team presented a session about teaching nutrition in the classroom. Carol Mennen of Fox Valley Technical College and Wendi Halstead of MATC presented a course on how to teach students about the consequences of smoking. They passed out handouts so teachers could make use of this course.

One more highlight was a Thursday night storm that knocked out electricity – no lights, TV or phones. Lots of people left their rooms and roamed the halls, holding their cell phones for light, until the management started passing out lights. It was fun. Lights came back on 25 minutes later.

*Eileen Marotte*

## Student Success: A Speaking Engagement

On April 30, Andreas Valladolid, a student at Journey House, spoke to the board of directors about his journey from Mexico. This event kicked off Journey House's capital campaign to build a new school. The school will be added on to Longfellow Elementary School on South 22<sup>nd</sup> Street. The architects showed the layout of the school, including an 8,000 square foot gymnasium and three huge classrooms, as well as administrative offices.

Andreas was very much a hit at this important meeting. He gave his speech to his audience of 20 people, telling about his life here in the U.S. He said that he has dreams and goals,

and that because of Journey House, the teachers and the board, his dreams and those of his classmates seem real and attainable. He talked about how important it was to have a new school and that this community is thankful for Journey House's commitment to the neighborhood and education of its members.

Remember, this was all done without notes and in a second language. Andreas is to be commended for this endeavor. He said: "Teacher, I went home and sat down and talked to my mother about this event, and she said that she was very proud of me. This has given me more

confidence in my speaking ability."

This was a great opportunity for Andreas. As teachers, our goal is the success of the student. I feel positive that Andreas will succeed.

*Eileen Marotte*



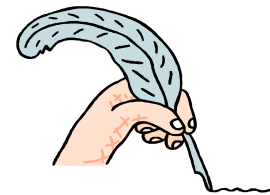
Andreas Valladolid and Eileen Marotte

## Student Writing: I Am Mone

I am Mone and I am a quiet person.  
I wonder if I will see new things in the U.S.A. that are different in Laos.  
I hear sounds from the sky.  
I see the woman in the moon.  
I want to stay healthy all my life.

I pretend I am in a bird house.  
I feel there is God in heaven.  
I touch my car toy.  
I worry about my neighbors that bother me.  
I cried when my mother died.

I understand every teacher is a good person.  
I say my son will have a job next week.  
I dream that my granddaughter will be a good teacher.  
I try to study English until I am better.  
I hope my son will go to study at college for a long time.  
I am Mone and I am a quiet person.



*Mone Samounty  
International Learning Center*



Greater Milwaukee Literacy Coalition

*Literacy through Collaboration*

P.O. Box 511121 • Milwaukee, WI 53203-0191

[www.gmlcwi.org](http://www.gmlcwi.org)

*GMLC Board of Directors*

*Barbara Felix, President*

*Literacy Services of Wisconsin*

*Tracy Loken Weber, Vice-President*

*Milwaukee Achiever Literacy Services*

*Char Tillman-Piery, Secretary*

*Council for the Spanish Speaking and Journey House*

*Anna Bierer, Treasurer*

*International Learning Center*

*Dawn Lauber, Past-President*

*Milwaukee Public Library*

*Eileen Marotte*

*Journey House*

*Kathy Mulvey*

*Washington Park Library*

*Susan Nemetz*

*Milwaukee Area Technical College*

*Peg Palmer*

*Milwaukee Achiever Literacy Services*

*Diane Snell*

*Racine Literacy Council*

*Newsletter editors: Mary Moze and Kathy Mulvey*

## **GMLC Dates**

Friday, June 13, 1-3 p.m.

**GMLC Membership Meeting**

Milwaukee Achiever Literacy Services

5566 N. 69 St., Milwaukee

Tuesday, July 15

**Nominations due** for Spirit Award and  
Community Service Award

Friday, August 1, 1-3 p.m.

**GMLC Board Meeting**

Literacy Services of Wisconsin

2724 W. Wells St., Milwaukee

Friday, August 15

**Deadline for GMLC Newsletter**

Friday, August 15

**Reports due** from Committee Chairs and  
Directors for the Annual Report

Tuesday, September 16, 5 p.m.

**GMLC Annual Meeting and Dinner**

Centennial Hall in the Central Library

814 W. Wisconsin Ave., Milwaukee